

VICTORIA HARVEY-JONES PhD, SANNEKE KOEKKOEK: Medscape, Global Education, London, United Kingdom; SARAH E. BOMBA PharmD, BCOP: Medscape, LLC, New York, NY, USA

BACKGROUND

With B-cell maturation antigen (BCMA)-targeted therapies available for multiple myeloma (MM), it is important that physicians are knowledgeable and competent in how to use these agents. This study aimed to determine whether online continuing medical education consisting of micro-chapters could improve the knowledge, competence, and confidence of hematologists/oncologists (hem/oncs) in managing patients with relapsed/refractory MM who are candidates for BCMA-targeted therapy.



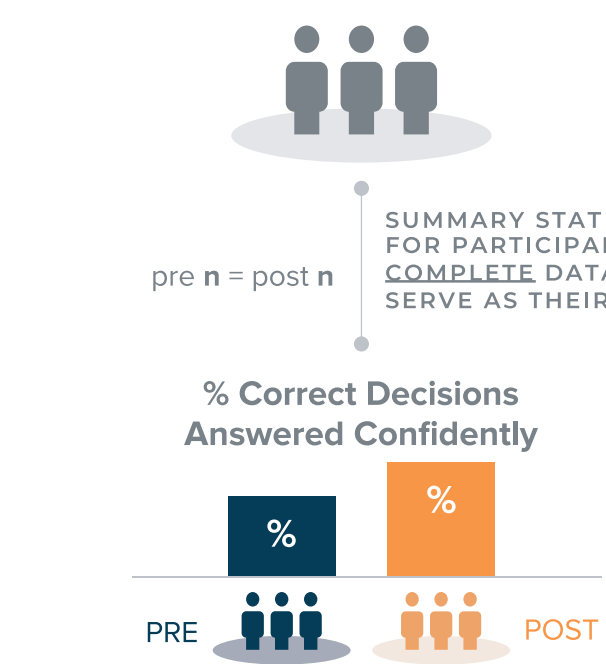
METHODS



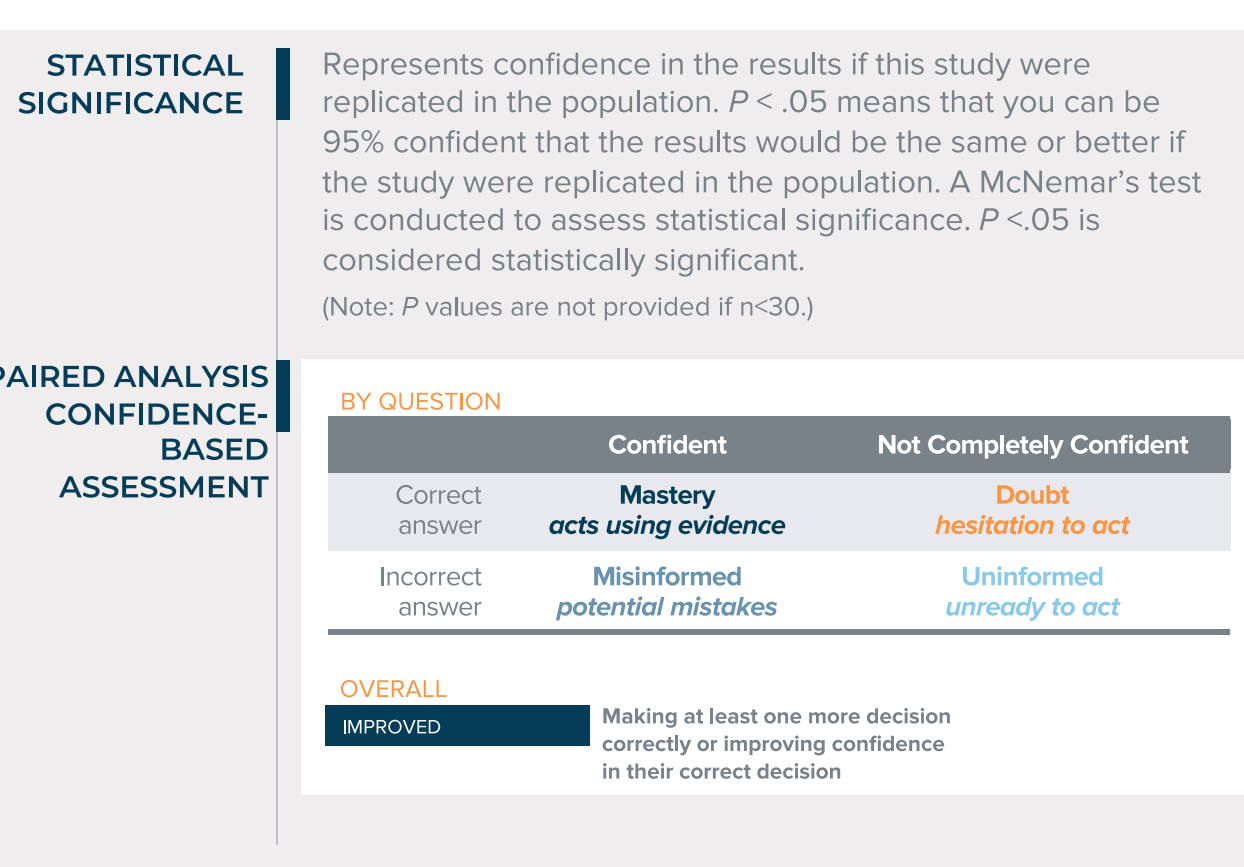
The educational initiative consisted of a collection of 5 online video-based micro-CME chapters, presented by three respected MM experts, allowing hem/oncs to choose the chapters for participation.¹ The activity launched 30 December 2022 with data collection through 18 April 2023.

REPEATED-PAIRS DESIGN

To assess educational impact, participants are asked to make decisions on the same patient cases prior to exposure to content (pre-assessment) and again after exposure to the content (post-assessment)

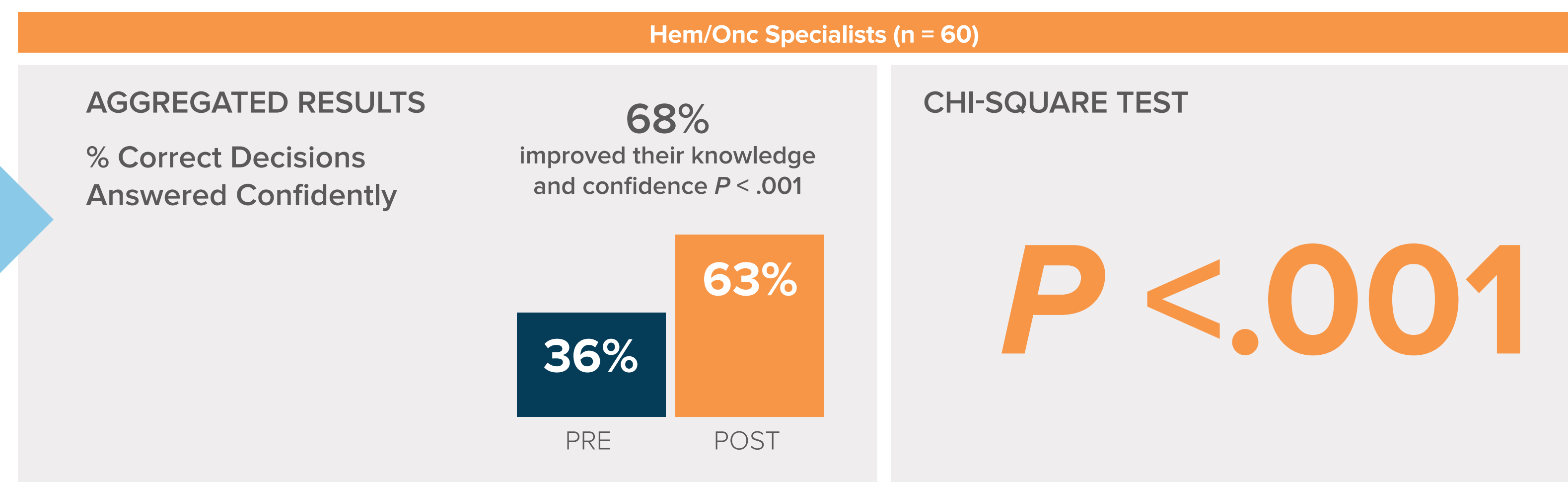


ANALYTICAL METHODOLOGY

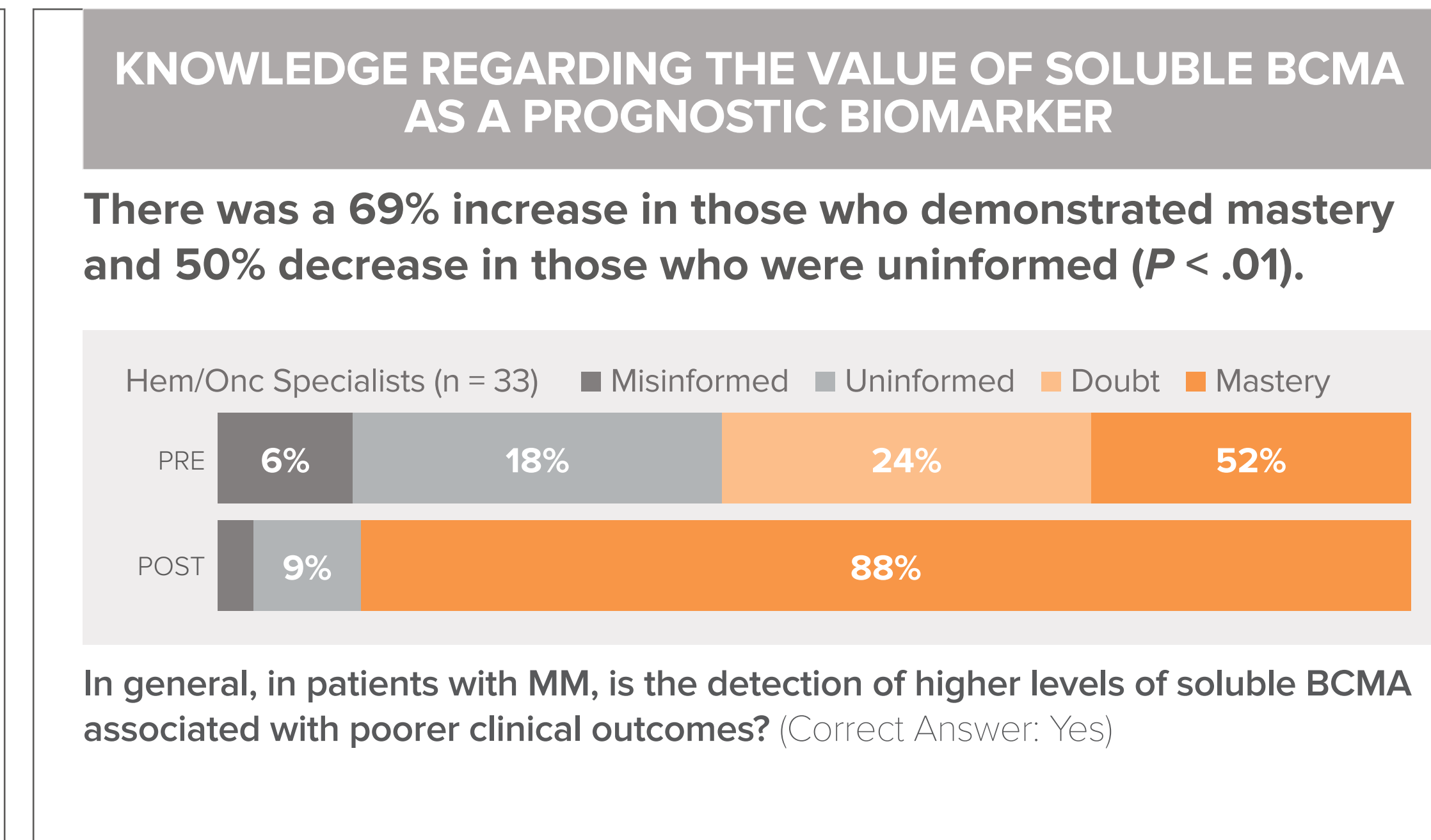
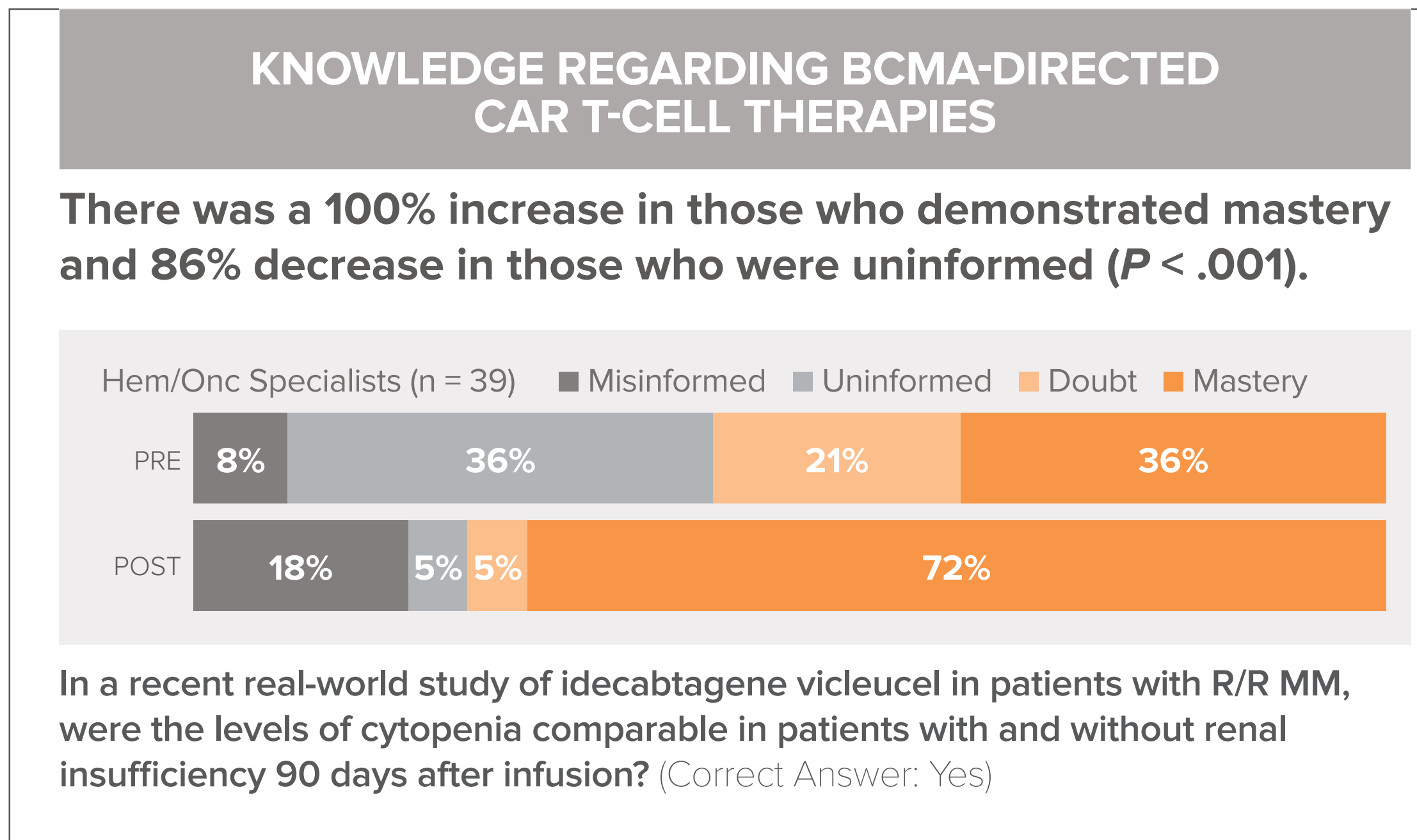
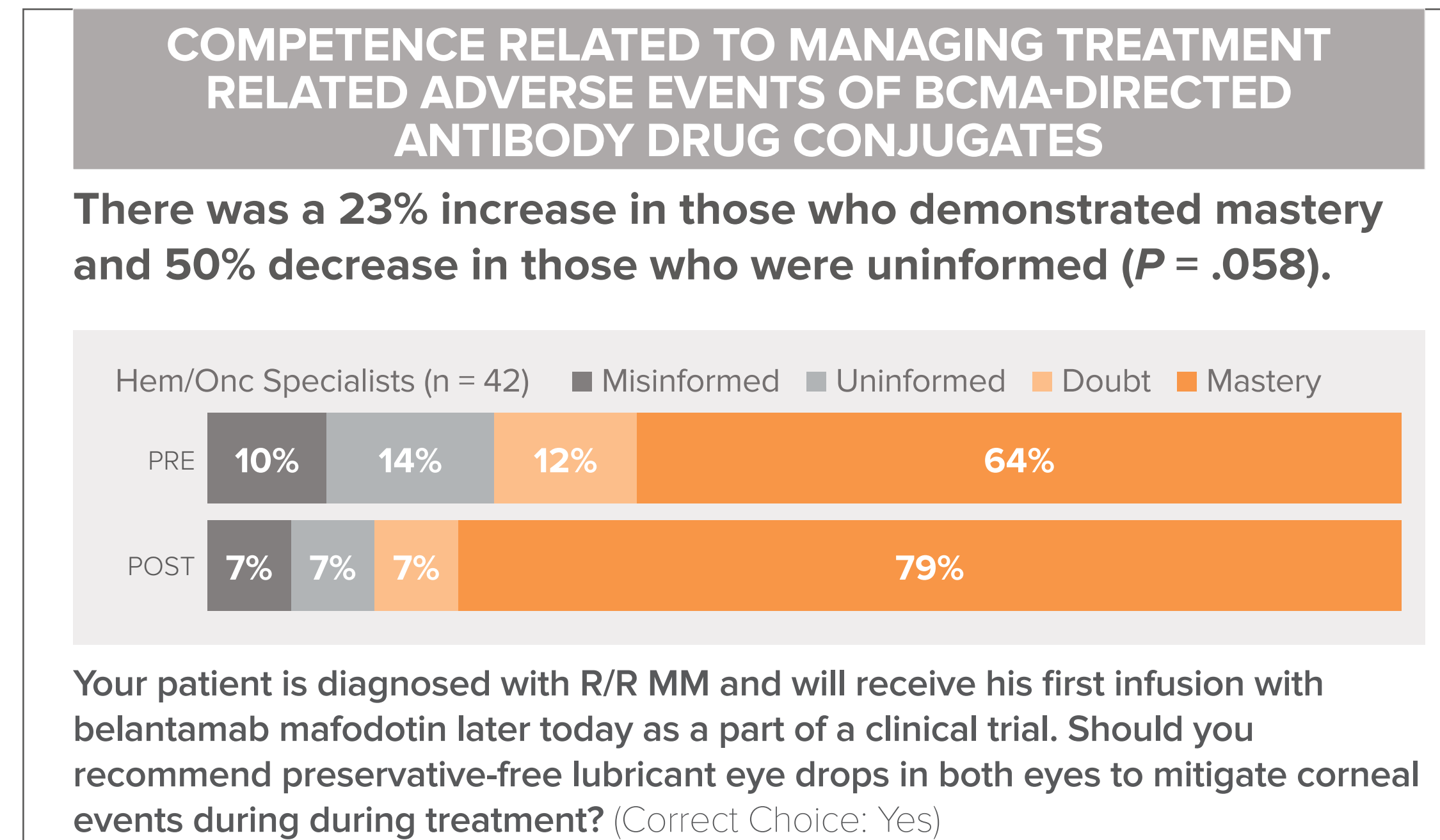
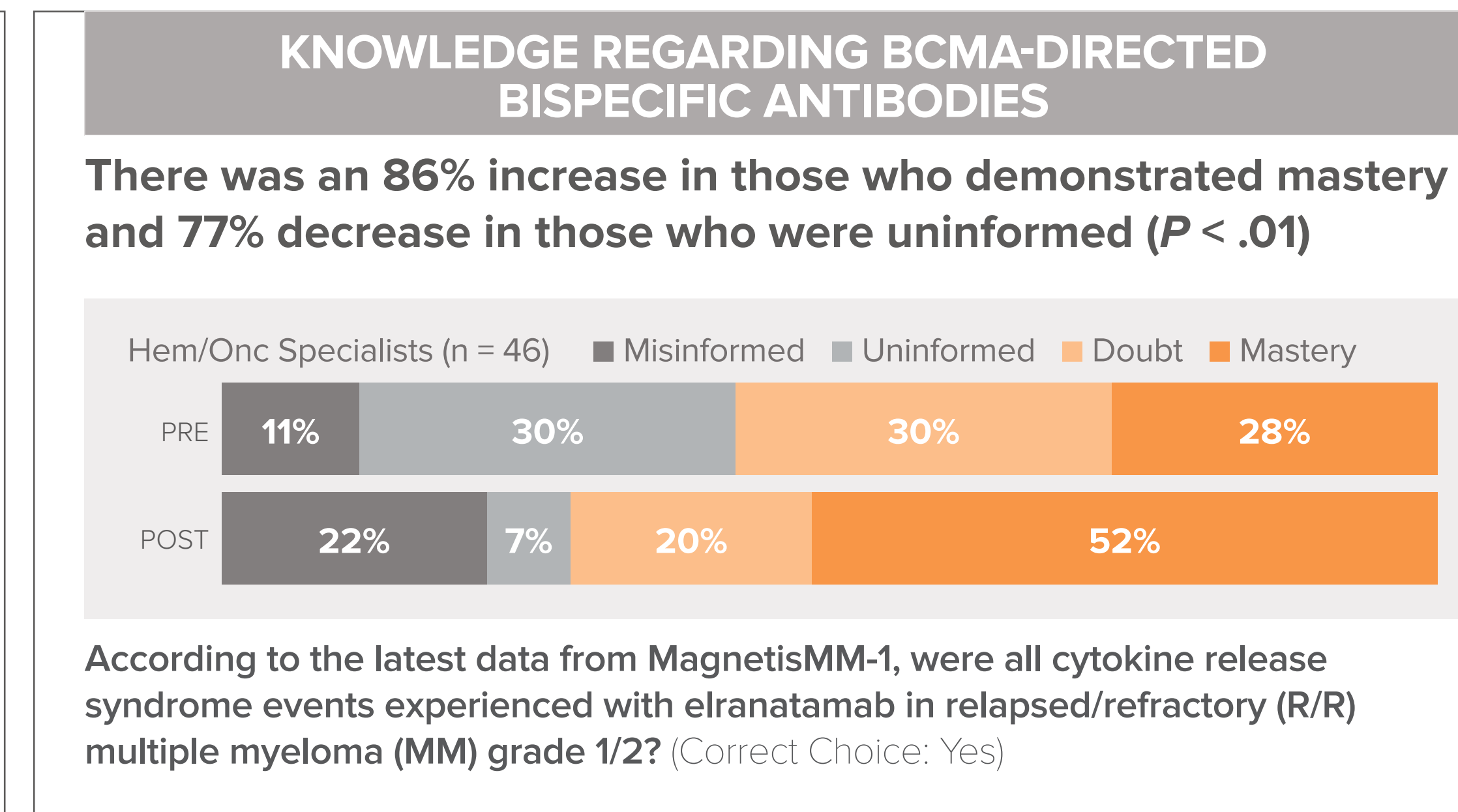
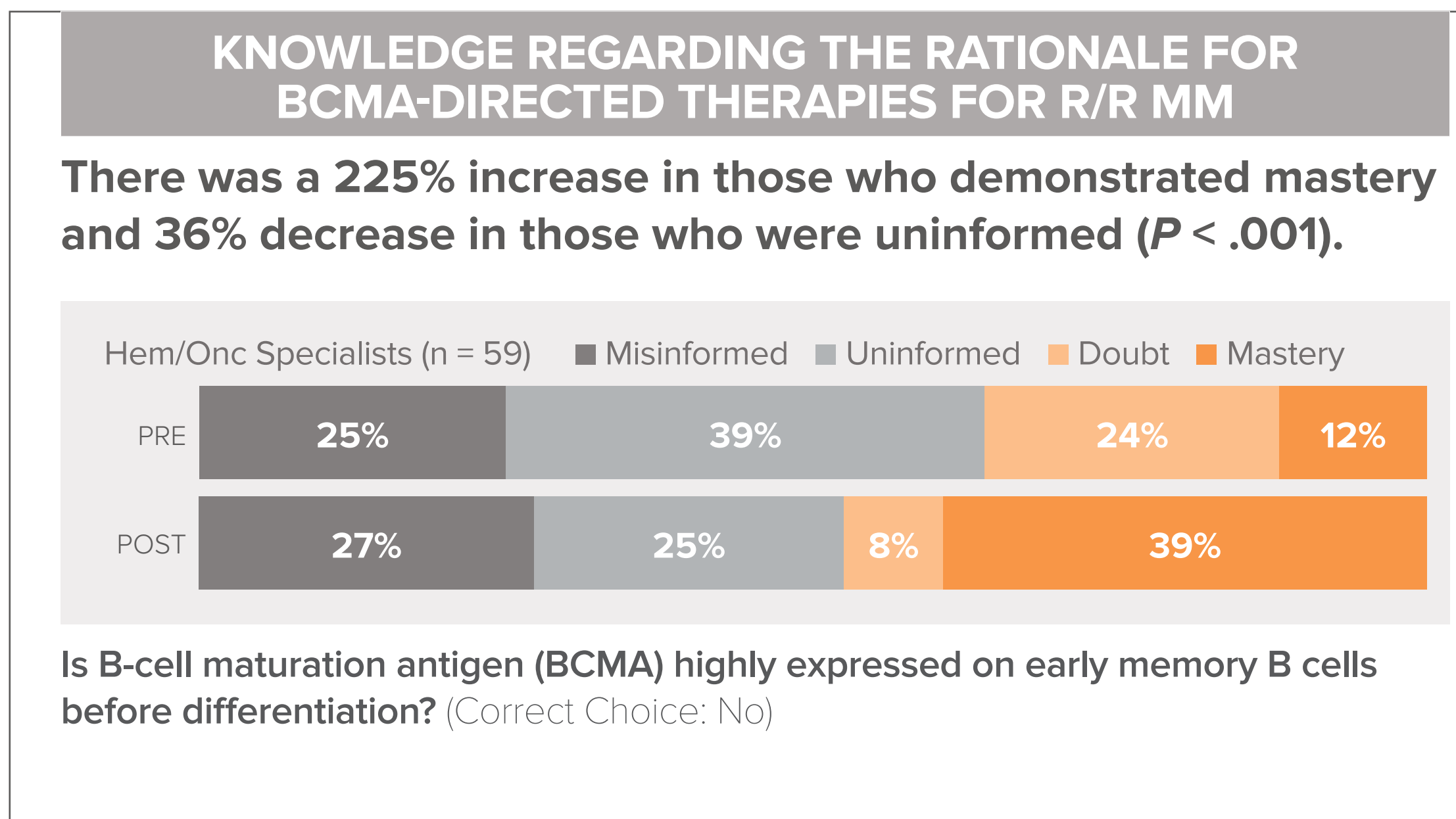


RESULTS

Improvements in percentage of correct decisions answered confidently were seen from pre- to post (36% vs 63%, $P < .001$). Overall, 68% hem/oncs improved their knowledge, competence, and confidence.



IMPACT BY CHAPTER - HEM/ONC SPECIALISTS							
Hem/Oncs	PRE	POST	% of Correct Decisions Answered Confidently	% Relative Change	% Who Improved	% Who Reinforced	P Value
BCMA Basics (n = 59)	12%	39%	225%	39%	17%	<.001	
BCMA-Directed Bispecific Antibodies (n = 46)	28%	52%	86%	43%	24%	<.01	
BCMA-Directed Antibody-Drug Conjugates (n = 42)	64%	79%	23%	45%	38%	.058	
BCMA-Directed CAR T-Cell Therapies (n = 39)	36%	72%	100%	54%	31%	<.001	
The Beyond (n = 33)	52%	88%	69%	61%	30%	<.01	



■ Misinformation: Confident but incorrect ■ Uninformed: Incorrect and not confident ■ Doubt: Correct but not confident ■ Mastery: Confident and correct

ACKNOWLEDGEMENTS

This CME activity was supported by an independent educational grant from Pfizer.

DISCLOSURES

Victoria Harvey-Jones, PhD, Sarah E. Bomba PharmD, BCOP and Sanneke Koekkoek have disclosed no relevant financial relationships.

For more information, contact: Victoria Harvey-Jones, PhD, Clinical Strategist, Medscape Oncology Global, vharveyjones@webmd.net.

CONCLUSIONS

- This study demonstrates the success of an online CME activity with micro video chapters on improving the knowledge, competence, and confidence of hem/oncs related to BCMA-targeted therapies for R/R MM. Additional gaps were identified for future educational targets.
- Confidence improvement has been shown to positively correlate with an intention to make practice changes,² suggesting that activity participants are likely to apply what they learned in their practice.

REFERENCES

1. Neri P, Raje N and Popat R. *Managing Relapsed/Refractory Multiple Myeloma: The Ever-Expanding Role of B-Cell Maturation Antigen as a Molecular Target*. Launched: 30/12/2022. Data as of 18/04/2023. Available at <https://www.medscape.org/viewarticle/986336>
2. Lucero KS, Chen P. What do reinforcement and confidence have to do with it? A systematic pathway analysis of knowledge, competence, confidence, and intention to change. *J Eur CME*. 2020;9:1834759.



Scan here to view this poster online.